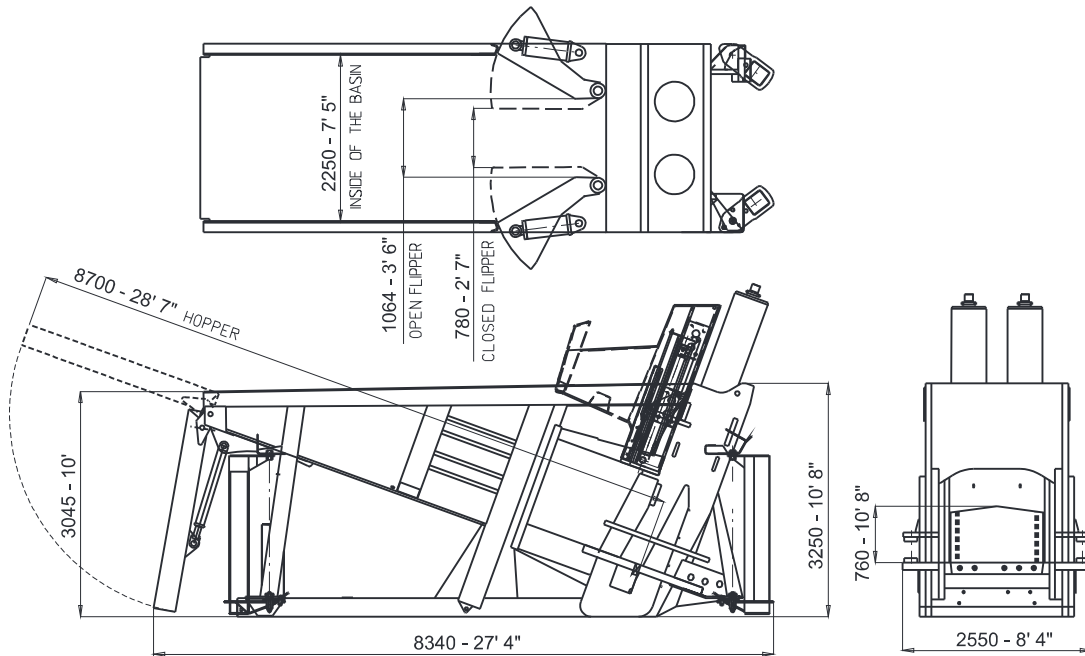


SHEAR SQUALO 13



Standard diesel engine or electrical motor	132 KW
Diesel fuel consumption ~	12÷14 l/h - 2,6÷3,1 gal/h
Productivity ≅	12÷14 tons/h
Weight of standard machine	48 tons
Adjustable length of shredded material	

TUTTI I DATI TECNICI POSSONO ESSERE CAMBIATI SENZA PREAVVISO - TOUS LES DONNÉS TECHNIQUES SONT SUJETTES A MODIFICATION SANS PREAVIS - ALL TECHNICAL DATA SUBJECT TO CHANGE WITHOUT NOTICE -
 TODOS LOS DATOS TECNICOS PUEDEN SER CAMBIADOS SIN AVISO - ALLE ANDERUNGEN DER TECHNISHEN DATEN OHNE VORANKUNDUNG VERBEHALTEN

Ing. BONFIGLIOLI s.p.A. 40050 Castello d'Argile - BOLOGNA – ITALIA

Email: service@ingbonfiglioli.it Web: www.ingbonfiglioli.it Tel. +39.051.6867214 Fax +39.051.6867222